

Planning for Sustainable Development

-The United Kingdom Example

Chris Gossop

Historical Perspective

- 2000 years of planning – the Romans
- Medieval fortified towns in Wales
- Formal TP of C18 - e.g. Bath, Edinburgh
- The Industrial Revolution – from 1770s
- Town expansion from the 1870s
- The Garden City Movement
- The 1947 T&CP Act and later reforms



The Hornby Street area of Liverpool 1902







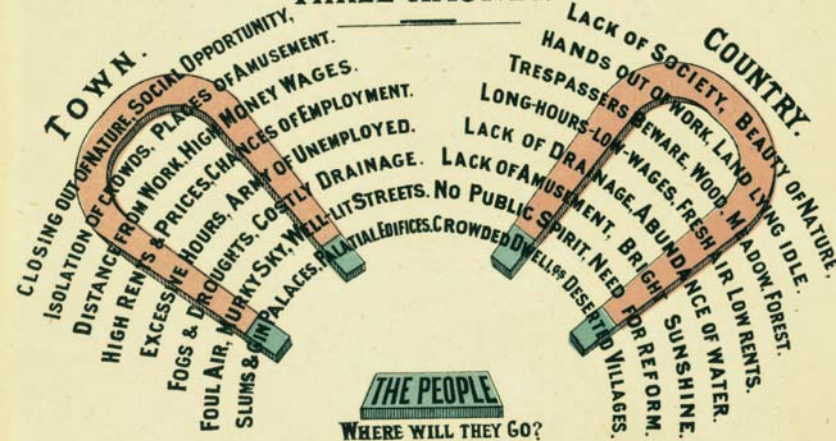


The result?

- Urban sprawl
- Ribbon development - loss of identity
- The suburbs – a valued place to live for many
- Loss of agricultural land
- Growing traffic congestion

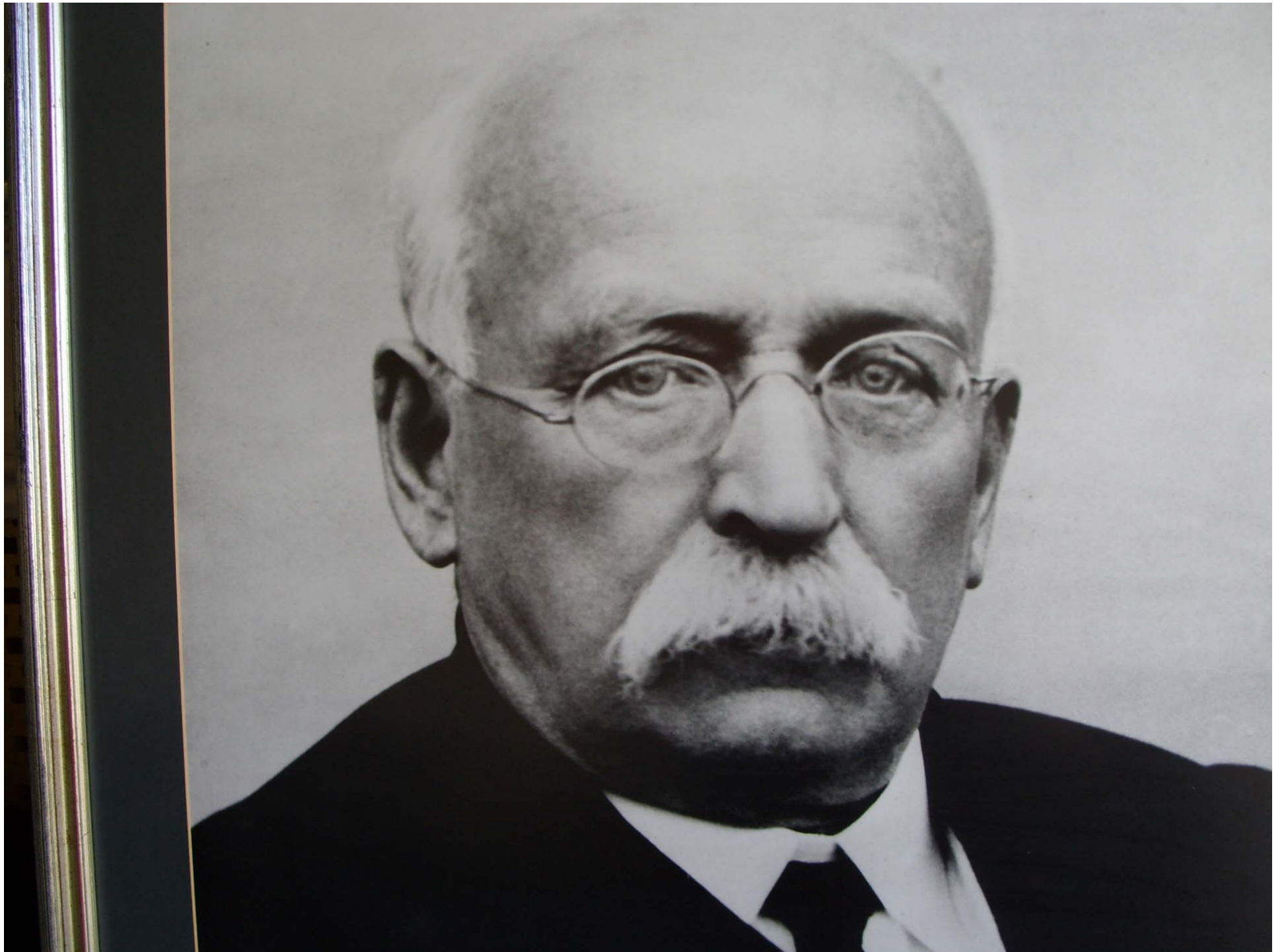
THE THREE MAGNETS.

Nº 1.



The Garden City Movement

- Ebenezer Howard 1850-1928
- Garden Cities of Tomorrow 1898, 1902
- The Garden Cities Association 1903
- The First Garden City Company 1903
- Letchworth Garden City
- The International Garden Cities and Town Planning Association 1909
- Welwyn Garden City 1919



Garden Cities

-main characteristics

- Organised planned dispersal
- Limit of town size
- Spaciousness of layout
- Close town/country relationship
- Pre-planning
- Creation of neighbourhoods
- Unified land ownership
- Progressive municipal and co-operative enterprise







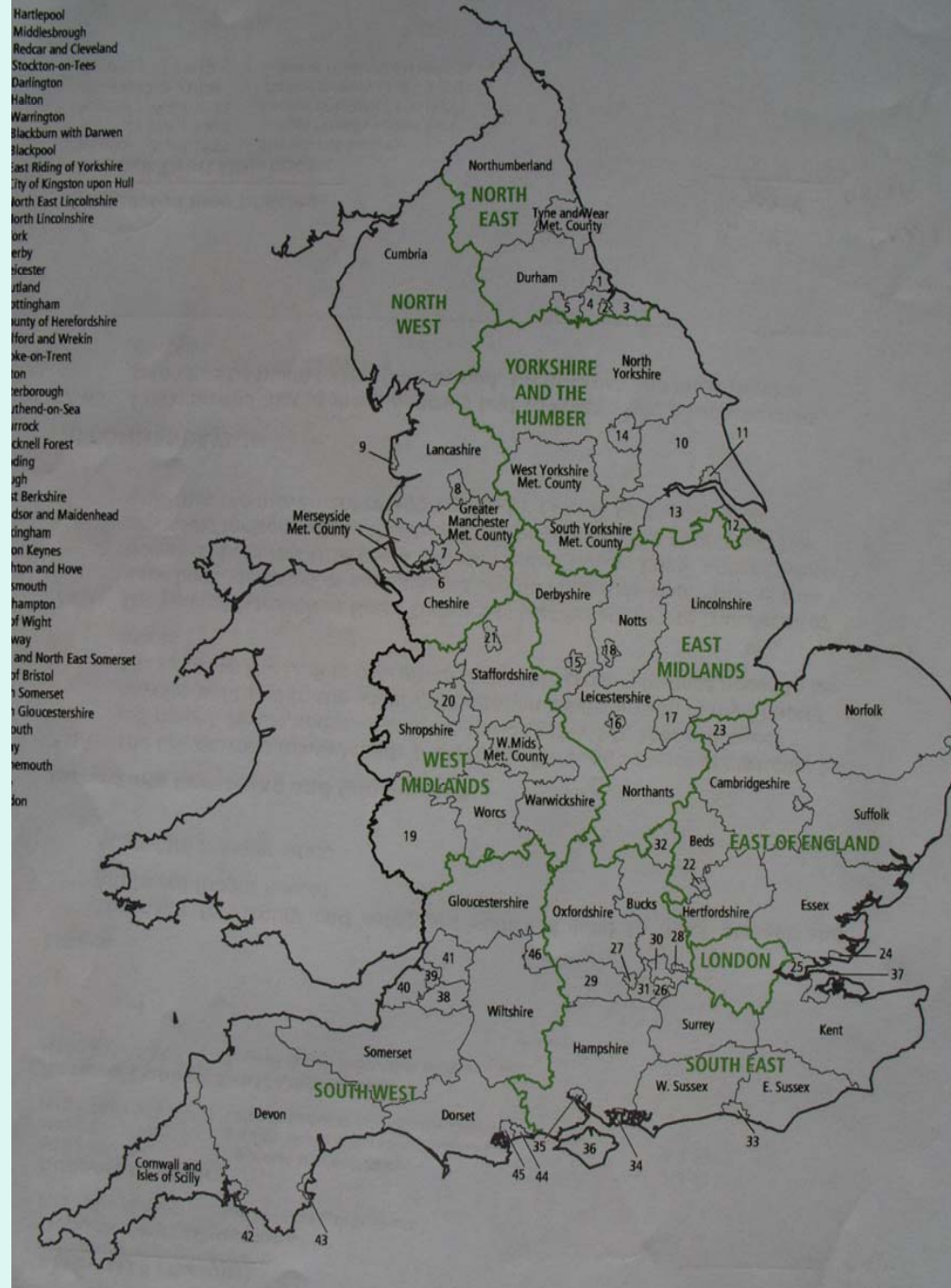




Planning Legislation

- The 1947 Town and Country Planning Act
 - Nationalisation of right to develop land/ planning authorities
- The 1968 Act - Structure Plans and Local Plans
- The 1990 Act - consolidation
- Planning and Compensation Act 1991
 - S.54a The primacy of the development plan S54a
- Planning and Compulsory Purchase Act 2004 – Regional Spatial Strategy (RSS)/Local development schemes

grants, Government Office Regions, Counties and Other Territories, 1990



The English System

- Regional Spatial Strategies (RSS)
- (Structure plans)
- Local Development Framework (LDF)
 - Core Strategy, Site Specific Allocations, Adopted Proposals Map, Area Action Plans
- Development control
- Planning appeal system
- Planning Policy Statements



Has the system worked?

- Housing and development needs – for example through the 32 new towns and other planned growth areas
- Helped our C19th towns adapt to modern era
- Protected our countryside
- Involved the public in decision making





PPS1 – Delivering Sustainable Development

- *‘Sustainable development is the core principle underpinning planning. At the heart of sustainable development is the simple idea of ensuring a better quality of life for everyone, now and for future generations’.*

Four Aims for Sustainable Development

- Social progress which recognises the needs of everyone;
- Effective protection of the environment;
- The prudent use of natural resources;
- The maintenance of high and stable levels of economic growth and employment



easy living at Waterside

the **easy** way to save on fantastic
2 bedroom apartments
Prices from only: **£75,000***
Part purchase

0845 600 3279  Derwent living
www.derwentliving.com



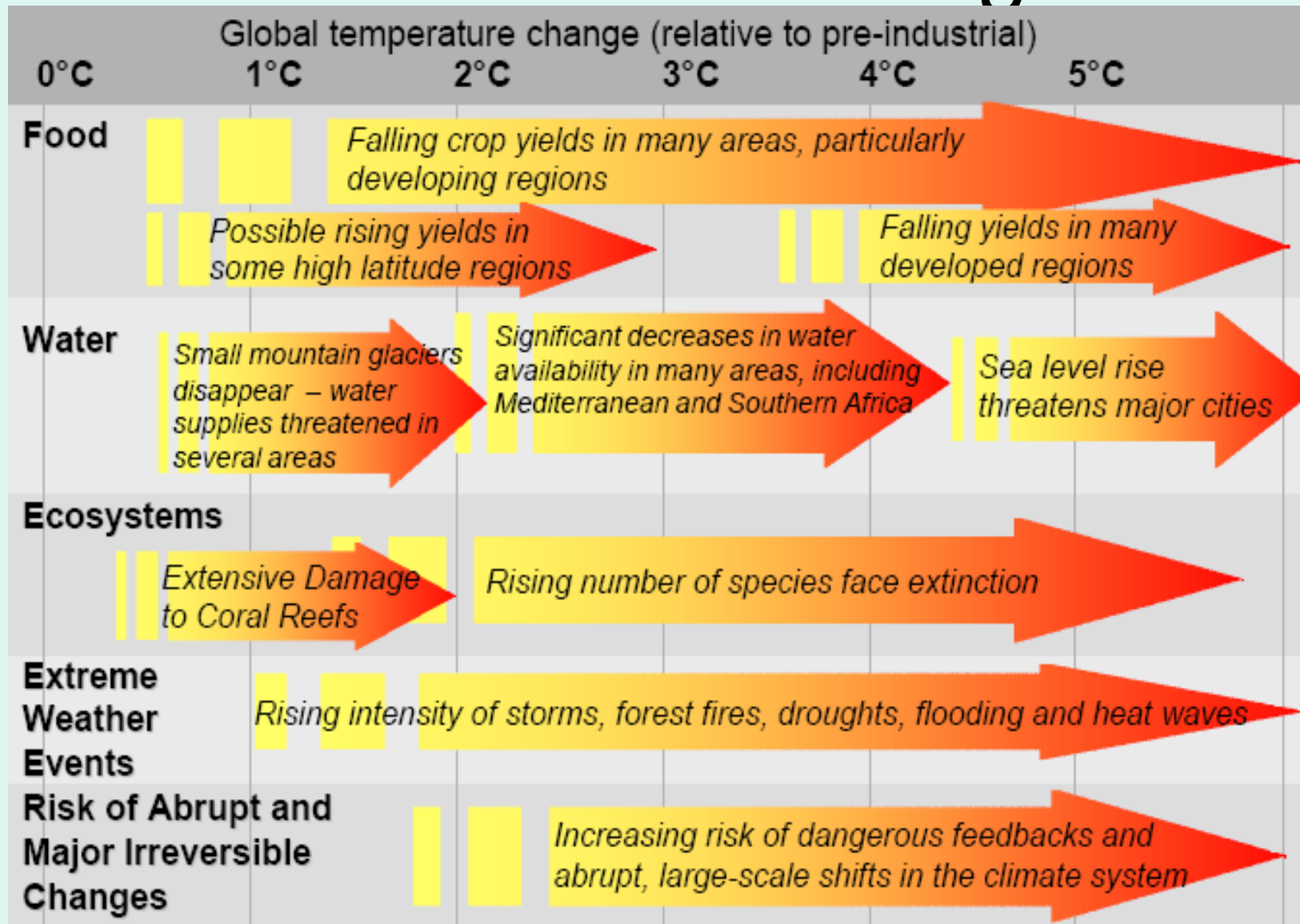




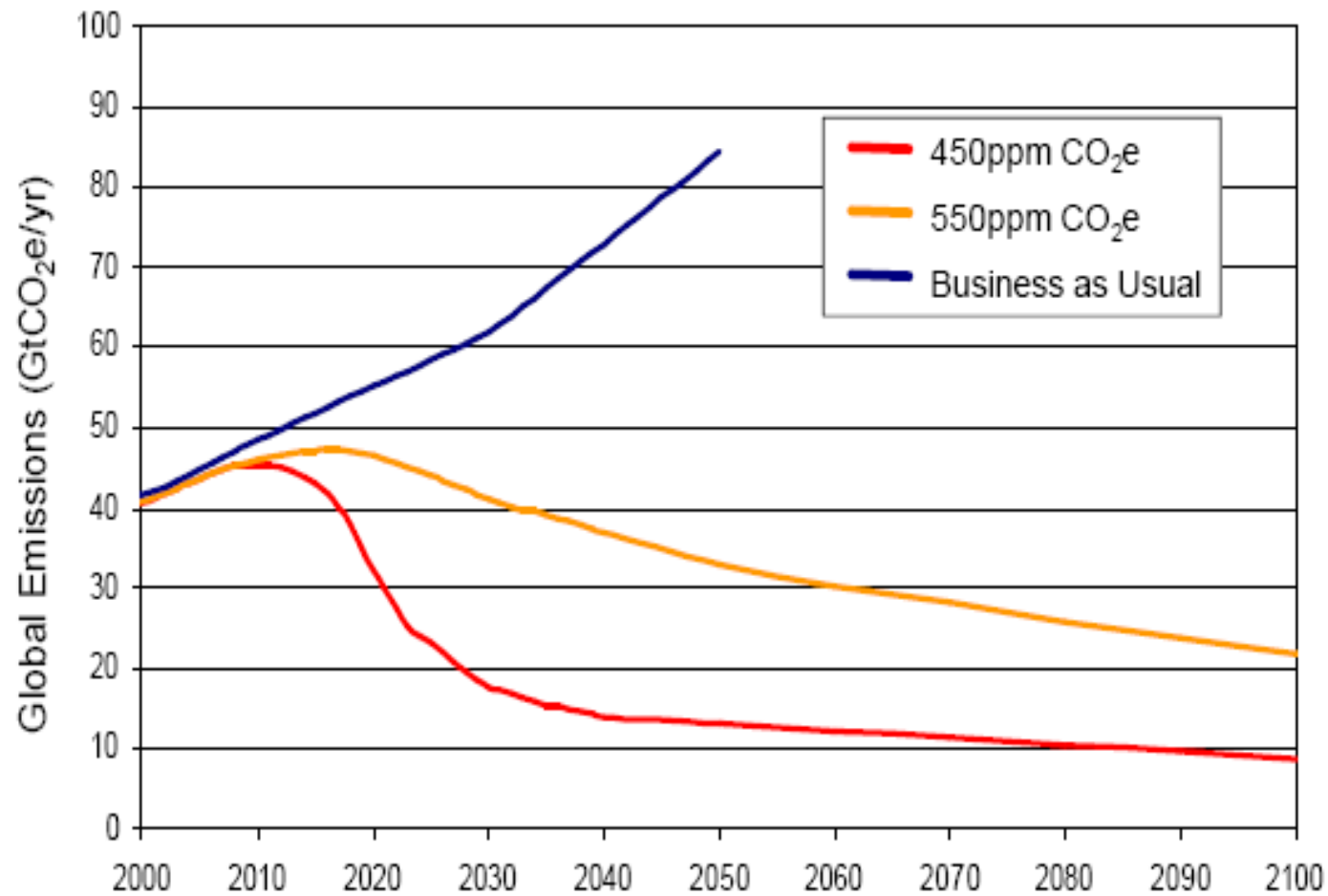




What is climate change?



Meaning business.....



Some suggest, even a
new coastline...?



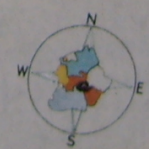
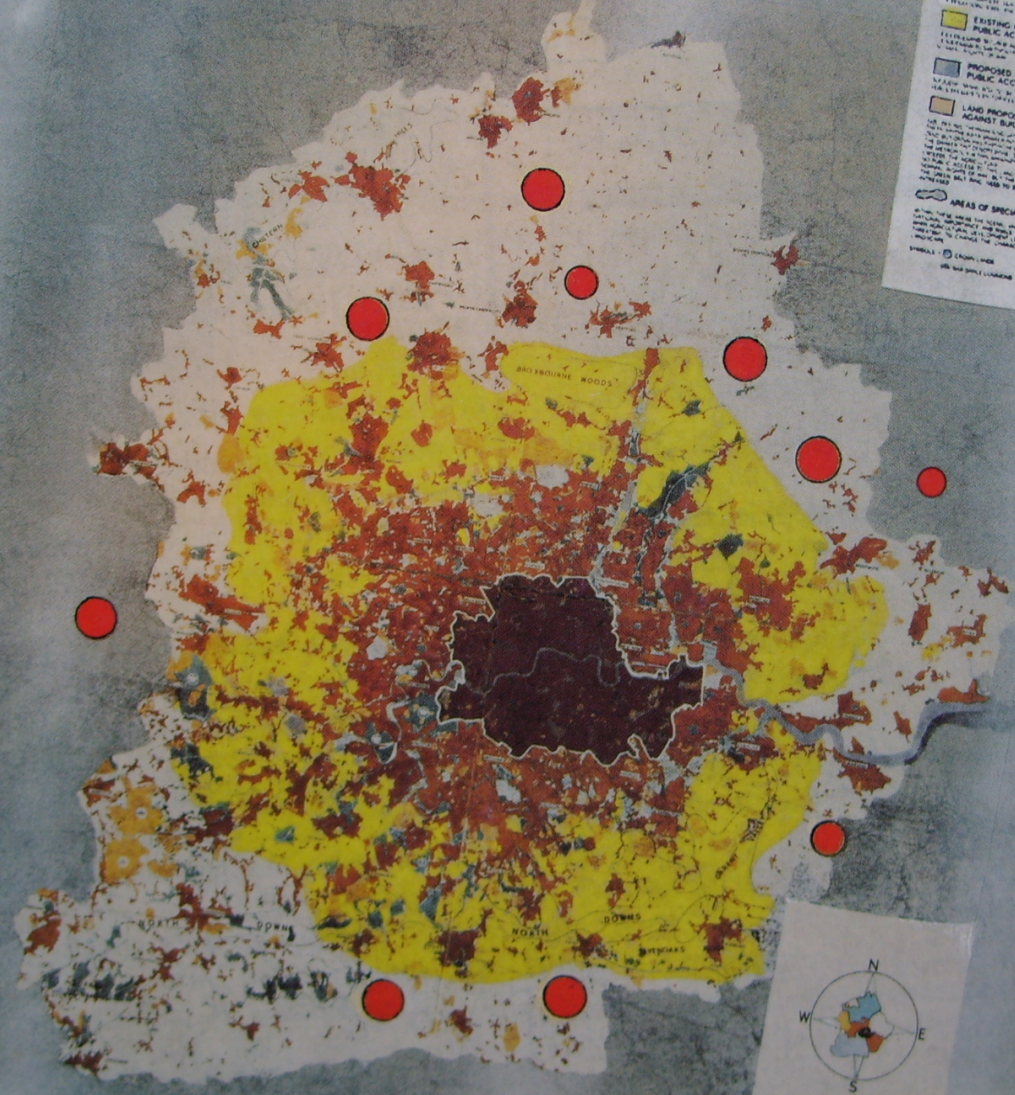
GREATER LONDON PLAN 1944

MILES

0 5 10 20 30 40 50

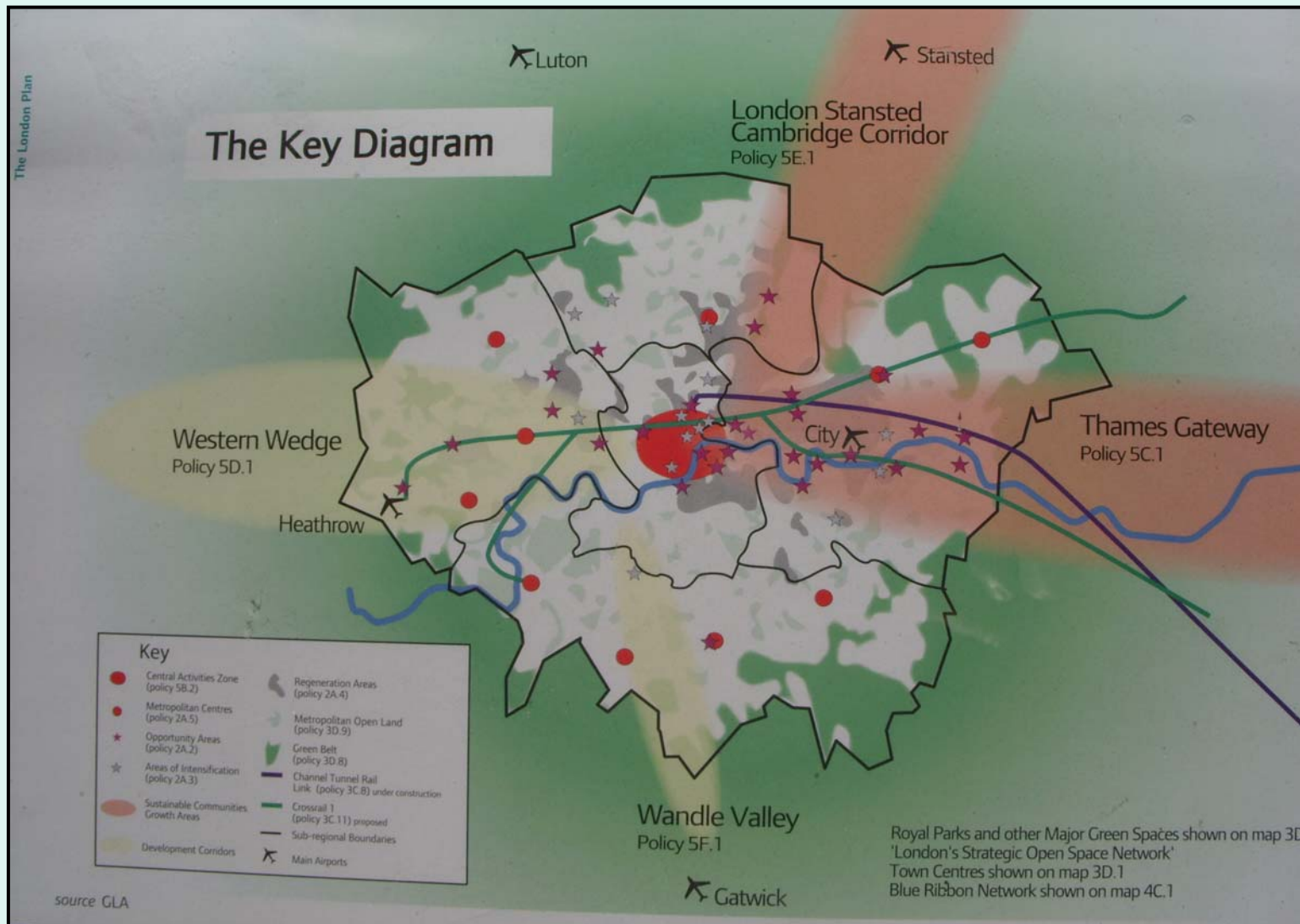
10

- PROPOSED LIMIT OF BUILT-UP LAND INCLUDING INDUSTRY, PUBLIC ACCESS
- EXISTING OPEN SPACE WITH PUBLIC ACCESS
- EXISTING OPEN SPACE WITHOUT PUBLIC ACCESS
- PROPOSED OPEN SPACE WITH PUBLIC ACCESS
- LAND PROPOSED TO BE RESTRICTED AGAINST BUILDING
- AREAS OF SPECIAL SCENIC VALUE



PREPARED FOR THE
MINISTER OF TOWN AND
COUNTRY PLANNING

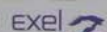
The London Plan – Key Diagram



King's Cross Central Illustrative Scheme Plan



LCR



Argent (King's Cross), London and Continental Railways and Exel. www.argentkingscross.co.uk





