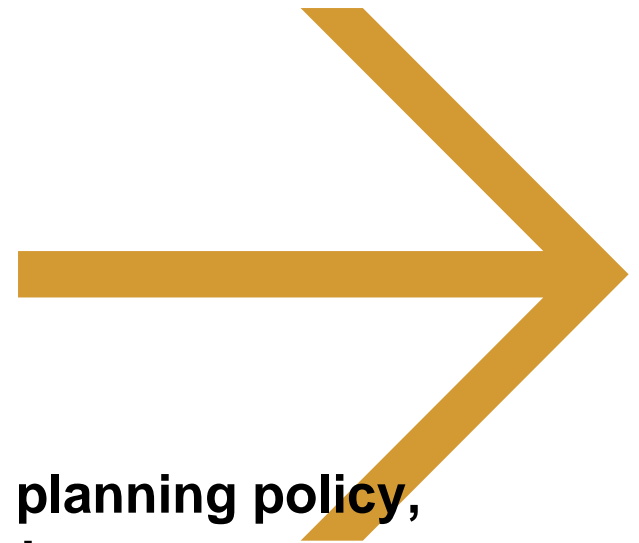


# The spatial planning system in the Netherlands, related to European sector policies



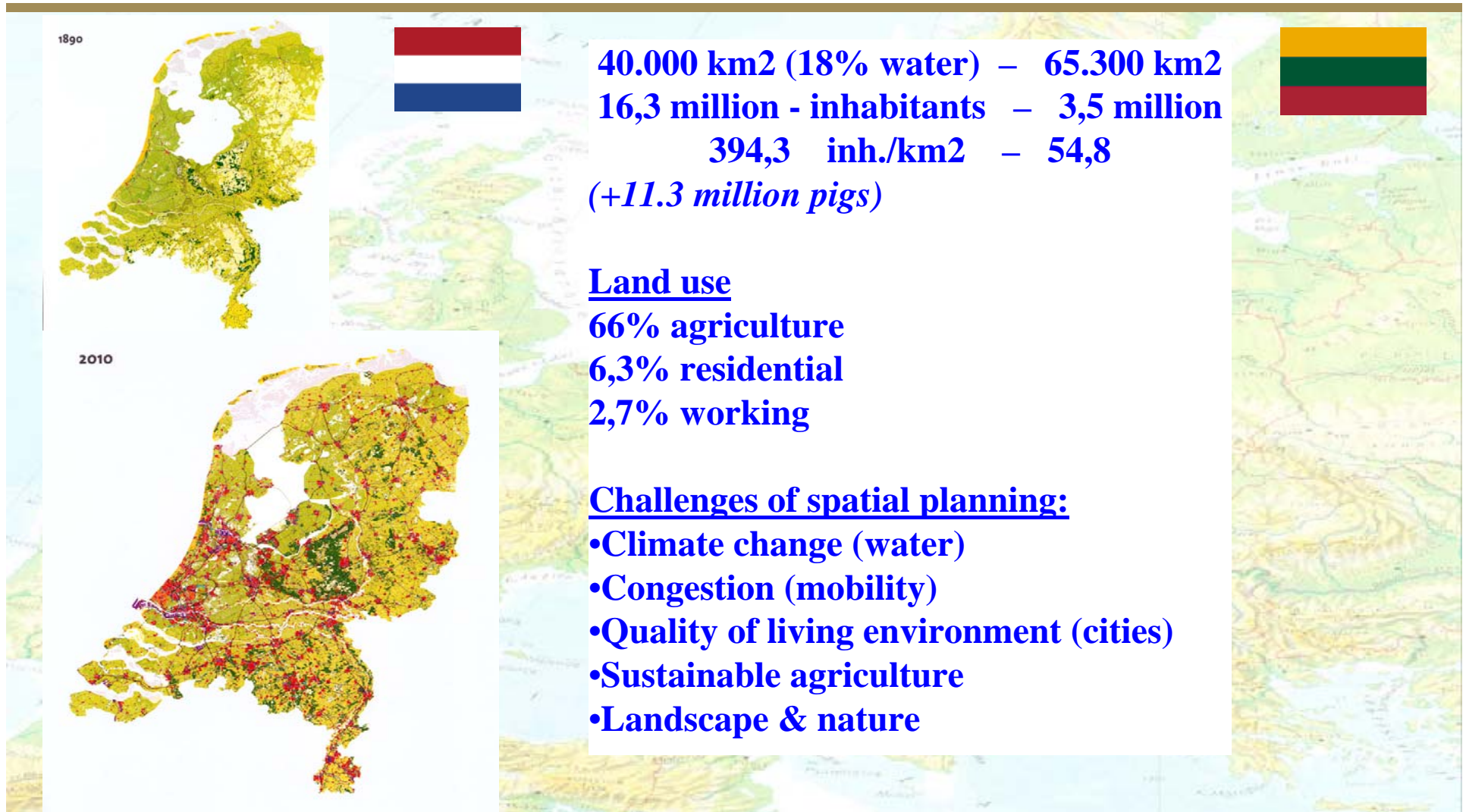
**Peter Petrus**, co-ordinator international spatial planning policy,  
Ministry of Housing, Spatial Planning and the Environment  
Vilnius, October 25, 2007

# → The Netherlands, part of the North-West Europe Metropolitan area





## A small and highly urbanized country





# → Public administration

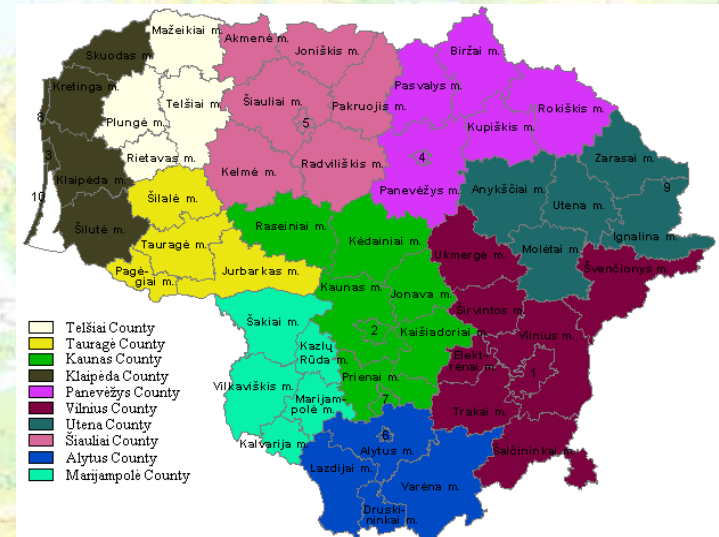


12 provinces

12 provinces / apskritys 10

443 municipalities 60

? Seniunijas 500



Biggest municipalities (inhabitants)



443 municipalities

1. Amsterdam 744.000	1. Vilnius 565.000
2. Rotterdam 581.000	2. Kaunas 400.000
3. The Hague 474.000	3. Klaipėda 205.000
4. Utrecht 290.000	4. Šiauliai 129.000
22. Leiden 117.000	5. Panevėžys 116.000
Average size 36.800	Average size 58.300



VROM





## A planning tradition: Netherlands - waterlands

- Since 1100: creation of water management boards: building of dikes and 'polders'

- Planning is necessary in a densely populated 'low lands'!

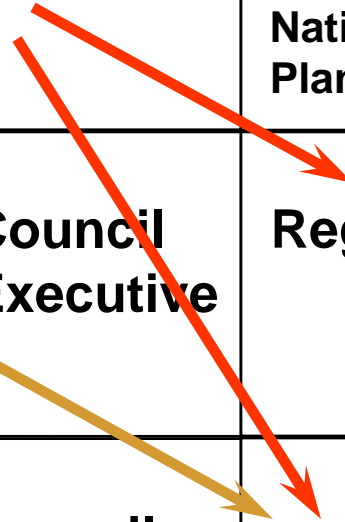
**40% below sea level**





## Planning System in the Netherlands

<b>National</b>	<b>Parliament Central Government</b>	<b>National Spatial Planning Strategy</b>  <b>National Structure Plan for Policy Sectors</b>
<b>Regional</b>	<b>Provincial Council Provincial Executive</b>	<b>Regional Plan</b>
<b>Local</b>	<b>Municipal Council Municipal Executive</b>	<b>Local Land Use Plan</b>







# The changing balance between nation, regions and cities

No strong urban network administrations

National Policy

Document on

Spatial Planning



Kaart B: Nationale Ruimtelijke Hoofdstructuur: economie, infrastructuur, verstedelijking

## economie

- economisch kerngebied
- economisch kerngebied buitenland (illustratief)
- mainport
- brainport
- greenport

## infrastructuur

- hoofdverbindingssas water
- hoofdverbindingssas spoor (w.o. Hanzelijn)
- Zuiderzeelijn / ontbrekende schakel IJzeren Rijn
- hoofdverbindingssas weg
- ontbrekende schakel hoofdverbindingssas weg
- scheepvaartroute

## verstedelijking

- nationaal stedelijk netwerk
- stedelijk netwerk buitenland (illustratief)
- ★ Nationaal Sleutelproject

## ondergrond

- vereenvoudigde topografie
- grens Exclusieve Economische Zone (EEZ) en 12-mijls zone

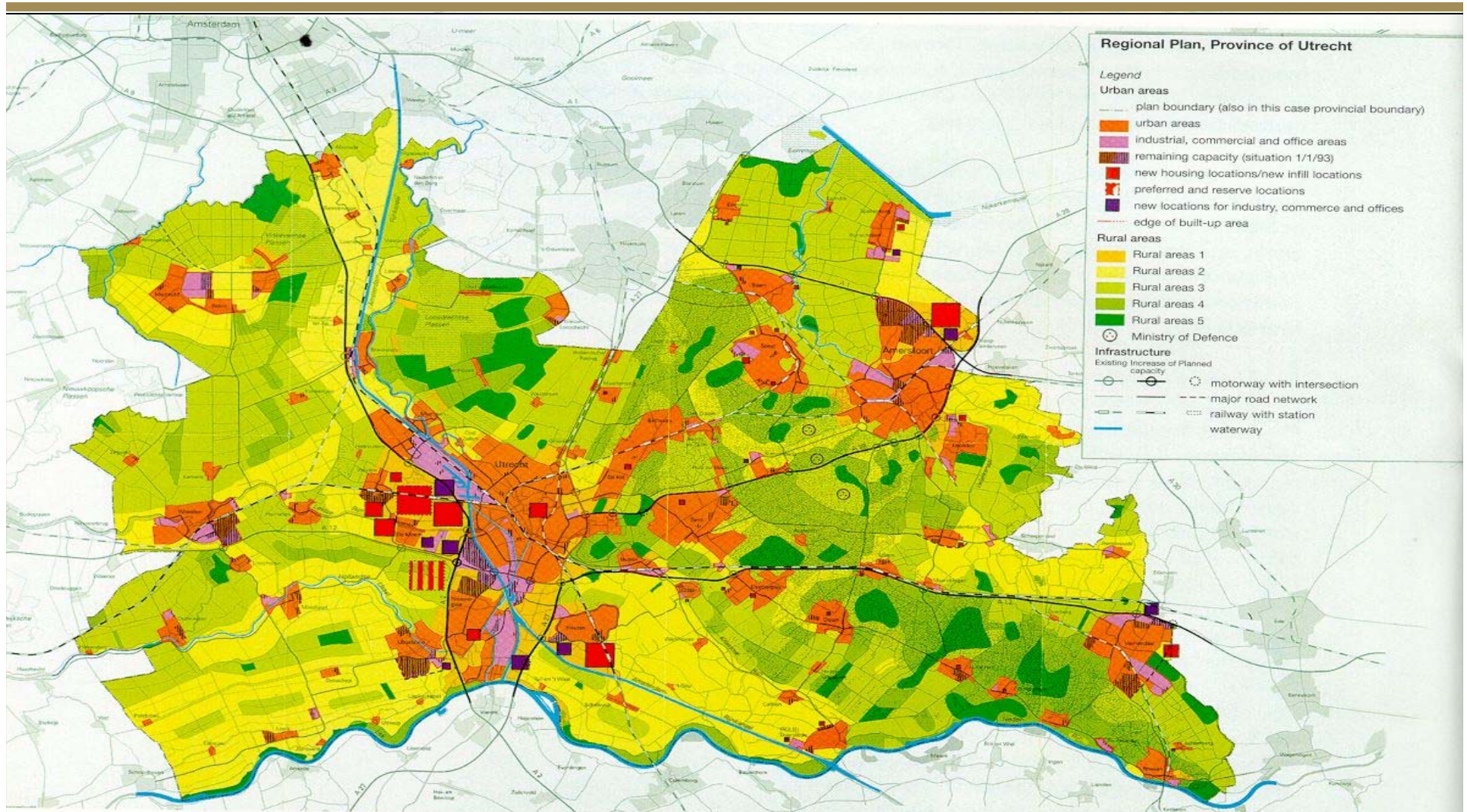


De nationale Ruimtelijke Hoofdstructuur omvat gebieden en netwerken, die voor de ruimtelijke structuur en het functioneren van Nederland van grote betekenis zijn. Voor deze elementen draagt het rijk dan ook in het algemeen een grotere verantwoordelijkheid dan daarbuiten. Ze staan voor complexe en/of kostbare opgaven die rijksbemoeienis noodzakelijk maken. Het gaat in de stedelijke sfeer om elementen en opgaven, die voortkomen uit ontwikkelingen met betrekking tot de economie, de infrastructuur en de verstedelijking en uit het onderlinge verband van deze drie ruimtevragende functies.





## Regional Plan of the province of Utrecht









## The new Spatial planning act (2006)

<b>National</b>	<ul style="list-style-type: none"> <li>•Order in Council</li> <li>•Instruction</li> <li>•Integration plan (projects)</li> <li>•<i>Pro-active</i></li> </ul>	<b>National Structural vision</b>
<b>Regional</b>	<ul style="list-style-type: none"> <li>•provincial order</li> <li>•Instruction <i>Pro-active</i></li> <li>•Integration plan</li> </ul>	<b>Regional structural vision</b>
<b>Local</b>	Local structural vision	<b>Zoning plans</b>



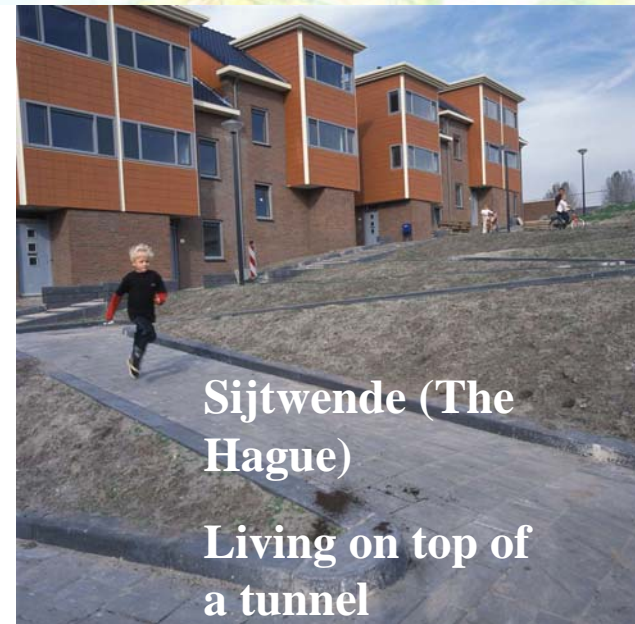


# ➔ The result: small scaled historical cities





➔ And new quarters: large scale compared to Dutch tradition, but small scaled compared to...



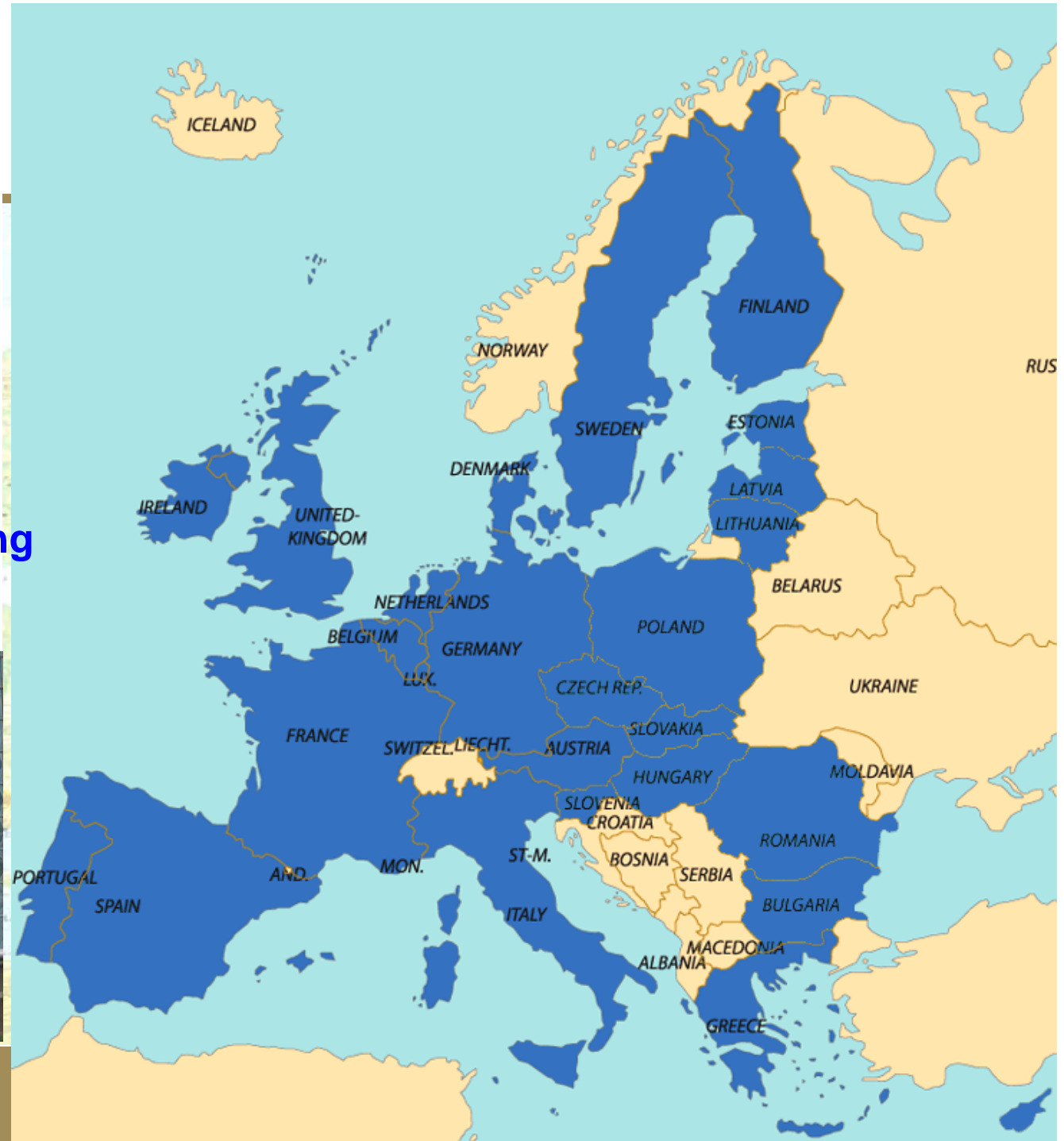


## The fourth level the European Union

No explicit competence  
for  
spatial planning policy

subsidiarity principle

How does this interfere  
with our national planning  
policies?





## Network to signalize Eu-initiatives with spatial impact



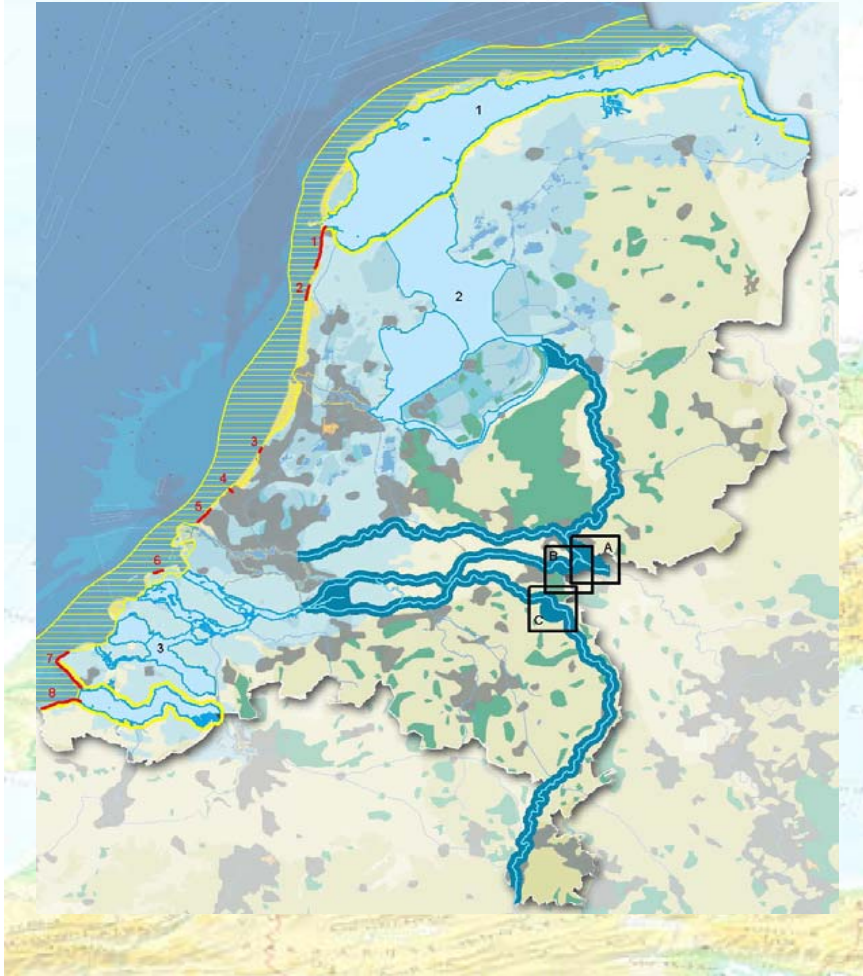
The ministry for  
spatial planning in  
The Hague

- The national + regional + local governments work together!
- Scanning the *Legislative and Work Programme* of the European Commission
- Quick scan of *spatial impact*
- Decision for action concerning 'what?' and 'how?' in The Hague and Brussels





## 'Adaptation to climate change in Europe' .... How happy are we with this green paper?



NL: tradition of water boards and a detailed spatial planning

EC: 'mainstreaming': all EU policy sectors (Bird & Habitat directive, Structural Funds, Common Agricultural Policy, etc) ⇔ climate change conditions;

EC: confirms the need to develop a spatial planning approach to solve specific regional problems;

=> NL was involved in writing this green paper, is happy with its content, but has no need for detailed EU-legislation (standards, time limits) on this subject



# Green paper 'Towards a new culture for urban mobility' ....a tool for sustainable urban development?



**Subsidiarity: why does the European Commission interfere?**

**Environment solutions: does the Commission make use of its own legal means?**

**Vision: what will be the effects of new mobility concepts on urban quality?**

**Urban mobility exceeds the borders of the city;**





**Thank you!**

[peter.petrus@minvrom.nl](mailto:peter.petrus@minvrom.nl)



VROM

