

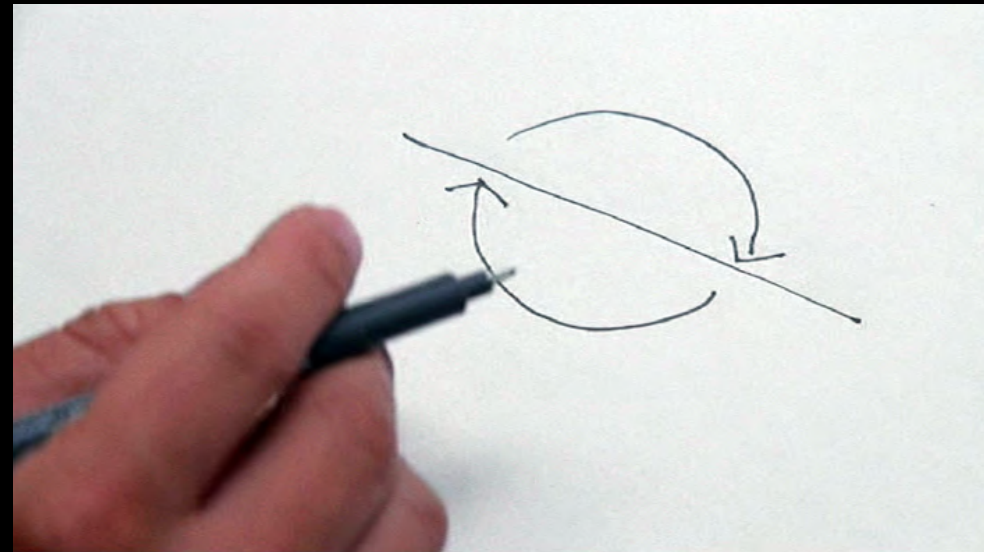
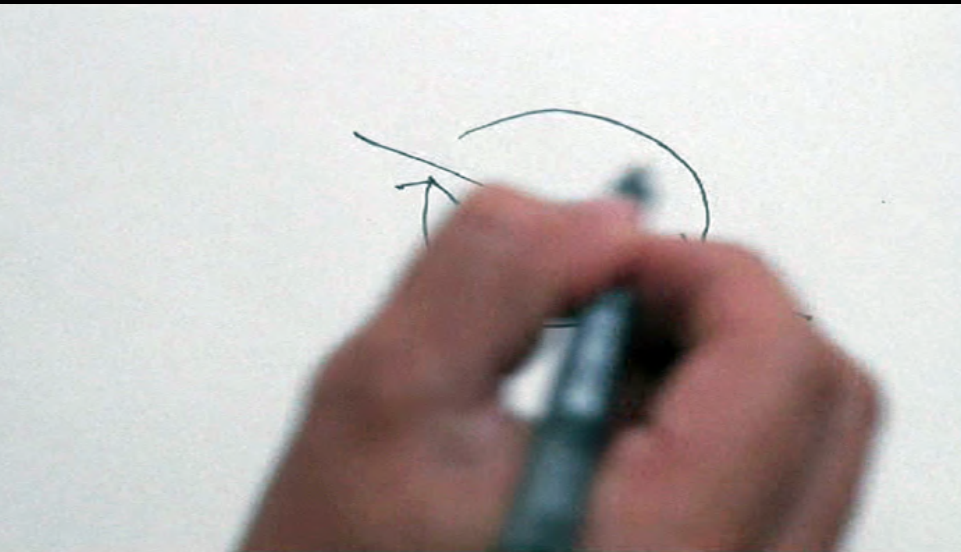
Raising Community Awareness on Sustainability

The case of the projects '(D)rain For Life' and ASPIS

Jekaterina Balicka - Friedrich Kuhlmann

Estonian University of Life Sciences Tartu

Inception – to launch, to start, to implant



stills from the movie 'inception' - 2010

„in a dream perception and creation happen simultaneously“

Nachhaltigkeit

Sustainability derived from forestry



Hans Carl von Carlowitz

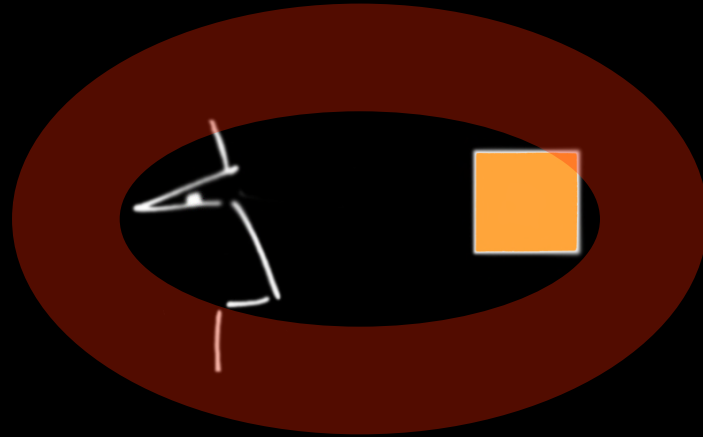
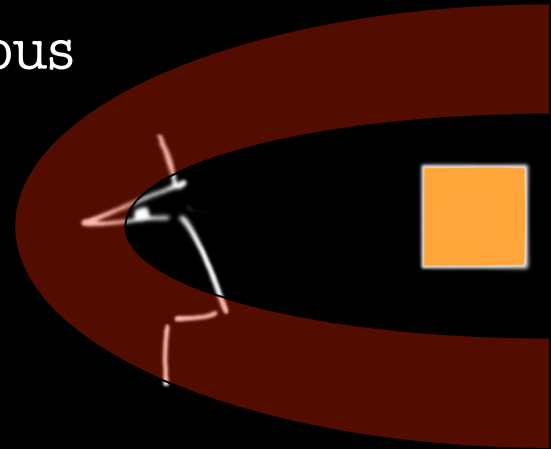
***the notion 'sustainability' seems obvious
further research on its necessity is outdated?***

environmental, economic and social sustainability
are forming the pillars of sustainability

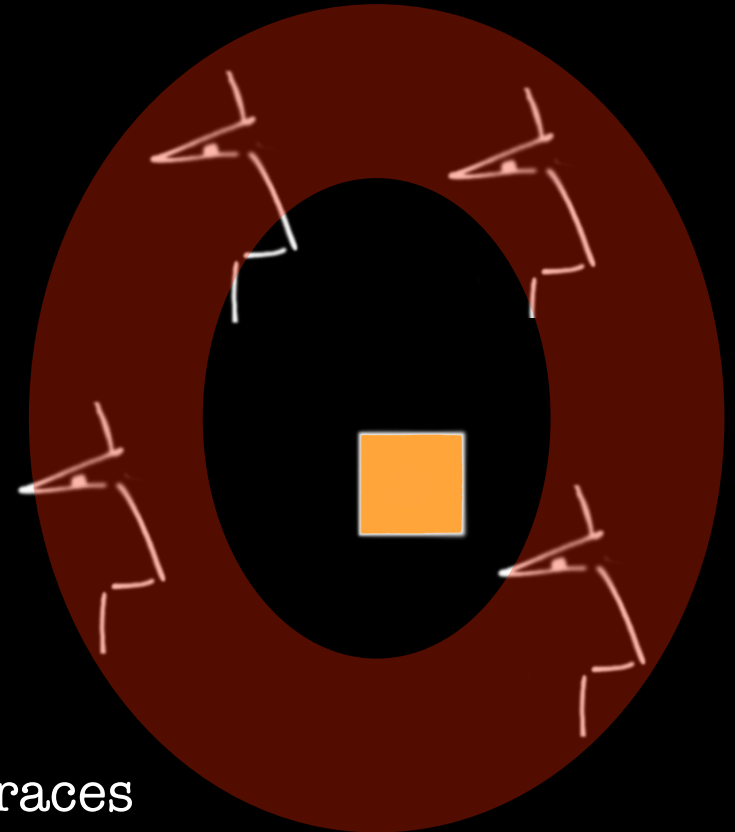
The pillars concept is criticized of being **hermetic and **denying development**.**

- . the social aspect is often seen as a black sheep*
- . social sustainability is the only pillar which breaks out of the concept.*
- . social sustainability does not only refer to its own metabolism of money or ecology*

Awareness - being conscious
of a space or a concept



Empathy - identifying with the
space or concept



Negotiation - space or concept embraces

***awareness** leads
the moving
gardener*



*urban agriculture
as a result
of food **empathy***

*....provoking **negotiation***

ASPIS - Auditing the Sustainability of Public Spaces

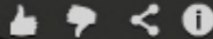
Pan-European research project 2009-2012

ISSUES AND CRITERIA		RANKING						INDICATOR	STAKEHOLDER				
	very little or not at all	a little	so-so	rather much	very much	don't know don't understand	not relevant	Successfully applied?	Place a ✓ to relevant stakeholders				
	1	2	3	4	5			YES	NO	GENERAL PUBLIC	PLANNERS	POLICY MAKERS	EDUCATION COMMUNITY
1. Variety / multiplicity of users								Parameters that define and explain the criteria					
1.1 Can the open space serve the needs of many different users?			x					(1) No of different types of users - preferable name them: children, youth, mothers with children, families, old people, young couples, local people, people coming from other areas, people working in surrounding areas (2) No of on-going activities (according to real use of space) (3) Use of site for educational activities by schools or NGOs	1,2,3		x (1,2,3)	x (1,2,3)	x (1,2,3)
1.2. Are the different users in conflict between them?			x					How can one identify conflict caused by different activities and users sharing the same space: (1)The level of noise from one activity does disturb other users (2) Overcrowding over a certain area of the open space (3) One activity expands over the area of other users and "squeezes" them (4) There are regulations or activity schedules that would manage and avoid conflict (refers to the presence of a mechanism that controls activities e.g. a person regulating the use of a basketball field or a written time-schedule for different activities)	1,2,3,4		x (1,2,3,4)	x (1,2,3,4)	x (4)
1.3 Is the open space designed in a way that accommodates well the different needs of users?		x						(1) Uses for small children (playgrounds) are well separated from other users. (2) Sports facilities are well separated from other uses (3) Pedestrians are separated from cyclists (4) Refreshment areas are delineated and limited, not to distract other recreation activities	1,2,3,4		x (1,2,3,4)	x (1,2,3,4)	x (1,2,3,4)
	very little or not at all	a little	so-so	rather much	very much	don't know don't understand	not relevant	Successfully applied?	Place a ✓ to relevant stakeholders				
2. Security/safety	1	2	3	4	5			YES	NO	GENERAL PUBLIC	PLANNERS	POLICY MAKERS	EDUCATION COMMUNITY

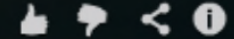
sustainability criteria in a star-rating-tool to evaluate public spaces

	very little or not at all	a little	so-so	rather much	very much	don't know don't understand	not relevant	Successfuly applied?	Place a 'x' to relevant stakeholders				
	1	2	3	4	5			YES	NO	GENERAL PUBLIC	PLANNERS	POLICY MAKERS	EDUCATION COMMUNITY
5. Organic relationship of the open space to the surrounding areas/the city - Select one of the two options: 5a open spaces serving local needs							5a						
5.a.1 Is there social cohesion with the neighbourhood?		x					(1) Meeting points for adults and kids (2) Number of people using the site regularly (3) Local community groups are actively involved (4) Social control is exercised by the local community	3	1,2,4	x	x	x	x
5.a.2 Is there economic cohesion with neighbourhood - interaction with local facilities and amenities?		x					(1) The site is surrounded by shops (2) The site is in short distance from education, recreation/ sport and cultural facilities/amenities (3) The site favours and is favoured by its proximity to these facilities and amenities	1,2,3			x (1,2,3)	x (1,2,3)	x (2,3)
5.a.3 Is there cultural cohesion with the neighbourhood?				x			(1) The open space is a symbol of the identity of the neighbourhood (2) Local cultural & social events are celebrated in the open space (3) The open space bears clear signs of the history and heritage of its neighbourhood	1,2,3		x (1,2,3)	x (1,2,3)	x (1,2,3)	x (1,2,3)
5b open spaces serving wider, non-local needs in the city							5b						
5.b.1 Is there social cohesion with the city?				x			(1) A large variety of users is present, from different parts of the city, including tourists (2) Number of people using the site regularly (3) All types of community groups, NGOs, are actively involved	1,2		x (1,2)	x (1,2)	x (1,2)	x (1,2)
5.b.2 Is there economic cohesion with the city - interaction with city-wide facilities and amenities?				x			(1) The site is in close proximity to central shops (2) The site is in close proximity to public buildings, recreation/ sport and cultural facilities/amenities of city-wide importance (3) The site forms part of a wider network of central facilities and amenities providing mutual support (4) The site originates economic activity through urban tourism	1,2,3,4			x (2,3,4)	x (2,3,4)	x (2,3,4)
5.b.3 Is there cultural cohesion with the city?					x		(1) The open space is a symbol of the city (2) City-wide cultural & social events are celebrated in the open space (3) The open space bears clear signs of the history and heritage of the city, relating to surroundings or included buildings and monuments	1,2,3		x (1,2,3)	x (1,2,3)	x (1,2,3)	x (1,2,3)
5c Connectivity							5c						
5.c.1 Is the public open space connected to a network of other public spaces or to a green corridor?		x					(1) The open space forms part of a wider network of green and/or historical/cultural public places in the city	1		x	x	x	x

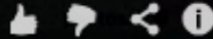
Serious Game ASPIS



Serious Game ASPIS



Serious Game ASPIS



***sustainability criteria in a
web-based game to create awareness
in public spaces***

Estonia-Latvia cross-border cooperation programme project

(D)rain for life

promoting sustainable urban drainage systems (SUDS) in Latvia and Estonia

4 case study areas: 2 in Estonia and 2 in Latvia

**Promoting Sustainable Urban Drainage Systems in Estonia-Latvia
cross-border area to improve the environment for active and
sustainable communities**



Linking Estonia and Latvia
Part-financed by the European Regional Development Fund



European Union



conventional vs. SUDS systems

social aspects of SUDS?

CASE STUDY PROJECT DEVELOPMENT

1. LV+EE project team + international expert: **brainstorming workshop**

← input

2. LV/EE local project team: **draft development**

3. international expert: **feedback**

← input

4. LV/EE local project team + local experts + communication expert: **workshop**

← input

5. local inhabitants + local experts: **communication via IT platform**

← input

RESULT

CASE STUDY PROJECT DEVELOPMENT

1. LV+EE project team + international expert: brainstorming workshop

← input

2. LV/EE local project team: draft development

3. international expert: feedback

← input

4. LV/EE local project team + local experts + communication expert: **workshop**

← **input**

5. local inhabitants + local experts: communication via IT platform

← input

RESULT



CASE STUDY PROJECT DEVELOPMENT

1. LV+EE project team + international expert: brainstorming workshop

← input

2. LV/EE local project team: draft development

3. international expert: feedback

← input

4. LV/EE local project team + local experts + communication expert: workshop

← input

5. local inhabitants + local experts: **communication via IT platform**

← input

RESULT



Baldone

Drain For Life

[login](#)


9.) Altern
Alternativ

8.) Altern
skvēram.

7.) Altern
/ Alternati

6.) Altern
Alternativ

5.) Altern
Alternativ

4.) Pilskā
SUDS for

3.) Rīgas
Street

2.) Iecava
Street

1.) Esošā



Ilgtspējīgas lietus ūdeņu apsaimniekošanas sistēmas risinājums Rīgas ielai un tā skaidrojums. Lūdzam jūs uzdot jautājumus un izteikt savu viedokli. // SUDS solutions for Rīgas Street. You can ask questions or express your opinion.

Question / jautājums / küsimus

Ask a question / Uzdoj jautājumu / küsige küsimus



Cik daudz ūdens tā sistēma uzņems?



sistēma rēķināta lietusgāzei, kas ir reizi piecos gados un ir stundu ilga (tātad, salīdzinoši liels apjoms). Rīgas ielas teritorijai tie ir apmēram 500 m3 ūdens

comment / komentārs / kommentaar

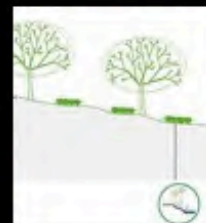
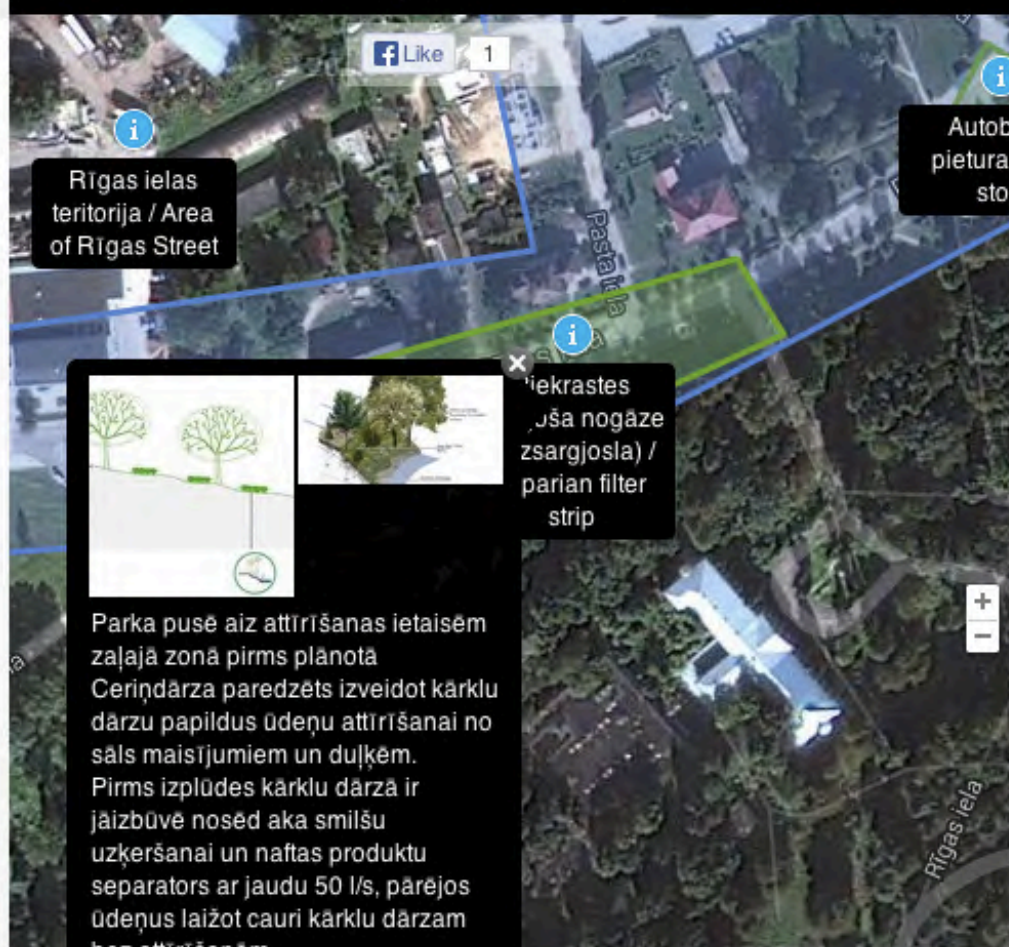


Ideja ir laba, bet man nepatīk tik gara zāle, gribētu, lai ir Tsāka!



Gara zāle ir labāk! Vismaz tajā vietā tas ir piemērotāk!

Rīgas ielas ĪLUA risinājums / SUDS for Rīgas Street



Pārkrastes (ja nogāze zsargjosla) / parian filter strip

Parka pusē aiz attīrīšanas ietaisēm zaļajā zonā pirms plānotā Cerīdārza paredzēts izveidot kārklu dārzu papildus ūdeņu attīrīšanai no sāls maisījumiem un duļķēm. Pirms izplūdes kārklu dārzā ir jāizbūvē nosēd aka smilšu uzķeršanai un naftas produktu separators ar jaudu 50 l/s, pārējos ūdeņus laižot cauri kārklu dārzam bez attīrīšanas.

sustainability criteria are evaluating and create awareness on
public spaces

sustainable urban drainage systems are creating awareness on
storm water issues

but under the condition of
social sustainability
they create...

perception of the surrounding
awareness on community life
neighborhood pride
social cohesion quality of life
 communal empathy

negotiation



Discussing sustainability criteria among user groups provokes social sustainability in a Public Space

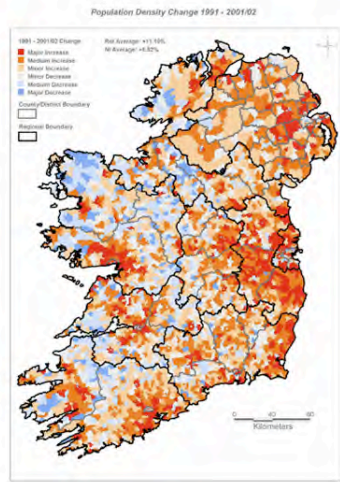
Social sustainability happens when the interaction between people and their environment is visible and therefore negotiable

Social sustainability fosters development: the more people are interacting the more the criteria are being fulfilled

‘welteinheimische Wesen’

world-indigenous creatures

management and dissemination of datasets across different organisations.



AIRO seeks to produce all-island, spatial datasets and specialist tools to aid their analysis and to undertake academic and applied mapping research. AIRO aims to act as a single point of access to a wide variety of spatial data and information about the various regions of Ireland. The intended audience of this site are planners, policy makers, researchers and those interested in gaining an understanding of the dynamics that are shaping the island of Ireland today.

Contact us and Subscribe to the AIRO Newsletter

Follow AIRO on Twitter

Subscribe to our RSS feeds and stay updated with AIRO News

LATEST NEWS

AIRO

[Live Register Figures 2007-2013 \(Sept\)](#)
With the latest CSO Live Register release figures show the continued downward trend with a decrease in seasonally adjusted figures of 1,800. This...

AIRO

[Crime Data From Station Level to Garda Division 2003-2013 Q2](#)

The CSO have released figures on recorded crime in Ireland covering the period from 2003 to 2013 Q2. Data is...

AIRO

[Government agrees measures to improve data-sharing in the public service](#)
The Minister for Public Expenditure and Reform, Brendan Howlin, T.D., has announced that the Government has agreed significant measures that will...

AIRO

[Graphic: The Story of the Irish Auto Industry 2007-2013 - Vehicle Registrations](#)
The data visualisation below charts the change in vehicle registrations and fuel types in Ireland between 2007 and 2013.

...
[AIRO & Scoilnet develop interactive mapping workplans for Leaving Certificate students](#)
Over the past couple of months AIRO has been working with the team at Scoilnet to develop a series of interactive census mapping workplans for...

scoilnet maps

1 of 71



Irish information site : www.airo.ie

shared space

perceiving community – creating community

raising community awareness via participation in

Temporary use
projects

Berlin. Tempelhof



Berlin. **Tempelhof**



Berlin. **Tempelhof**



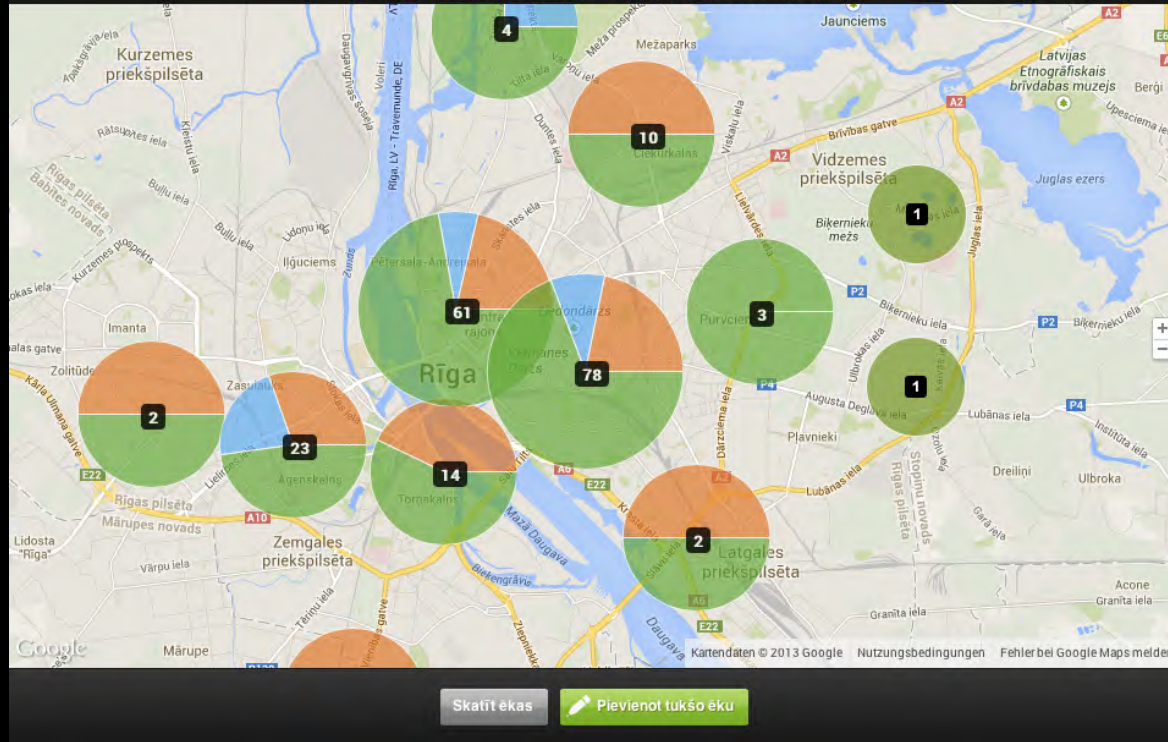


Berlin. **NEUKÖLLN**



Kur Rīgā ir tukšās ēkas?

● bankas īpašumā ● privatīpašumā ● pašvaldības / valsts īpašumā



occupy me - Riga



Yellow "occupy me" stickers have noted more than 200 buildings in the centre, while creative and public initiatives are unable to find space for activities.

The dialogue about abandoned lots stimulates the discussion about urban renewal and fosters participation. **2014 European Capital of Culture** can be the European Capital of empty spaces.

negotiation **VS.** *measurement*

stimulation – provocation to change

social sustainability unfolds potentials beyond
technical or ecological origin

boundaries of Landscape Architecture are widening when
social sustainability is raised